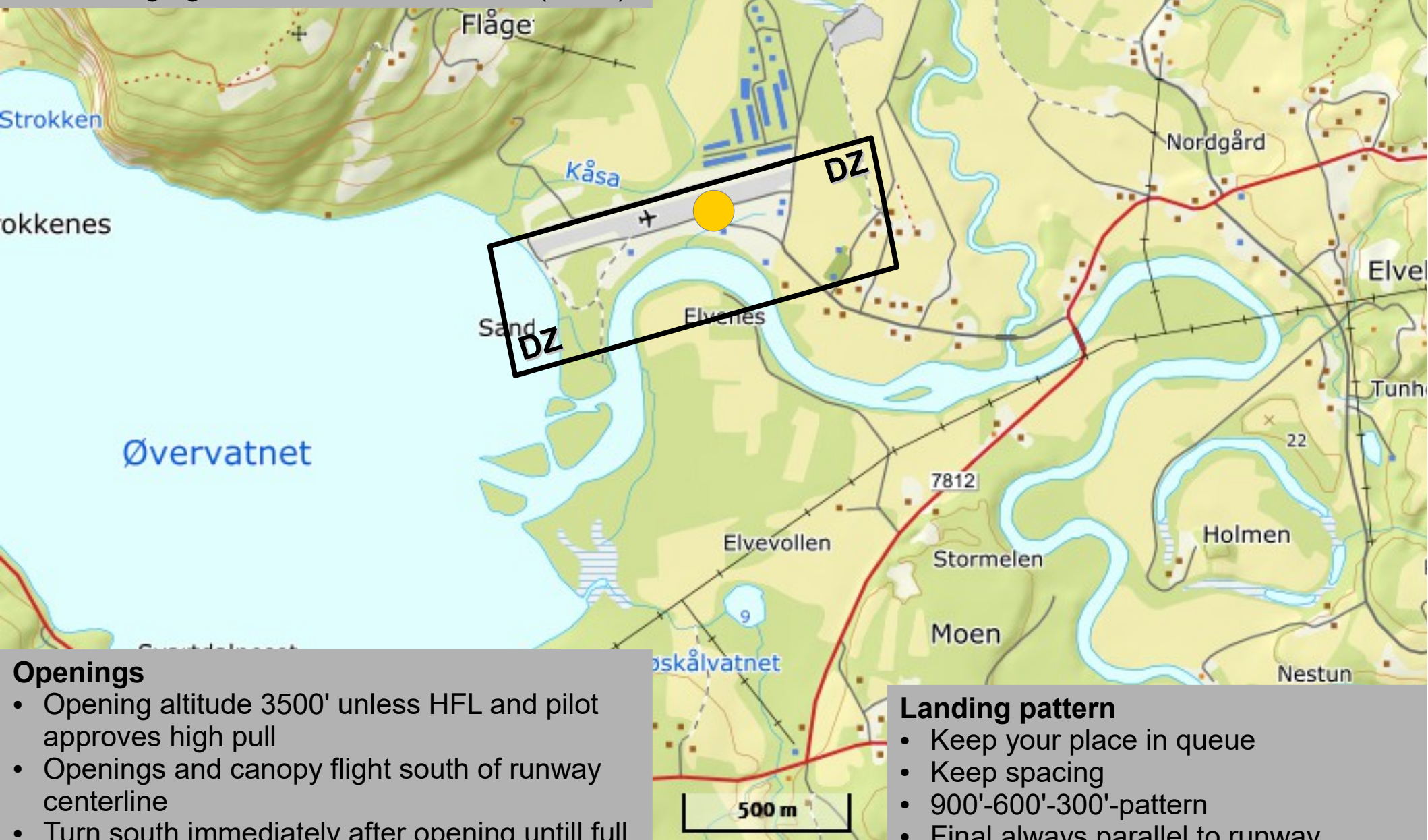


Jump run:

- Head wind, always parallel to the runway, south of centerline
- JM coordinates exits and spacing
- Avoid high ground north west of airfield (+600')

Runway center
N 68°52'15.5927"
E 17°59'3.6942"



Openings

- Opening altitude 3500' unless HFL and pilot approves high pull
- Openings and canopy flight south of runway centerline
- Turn south immediately after opening until full control of groups before and after

Landing pattern

- Keep your place in queue
- Keep spacing
- 900'-600'-300'-pattern
- Final always parallel to runway, right/left pattern pending on direction